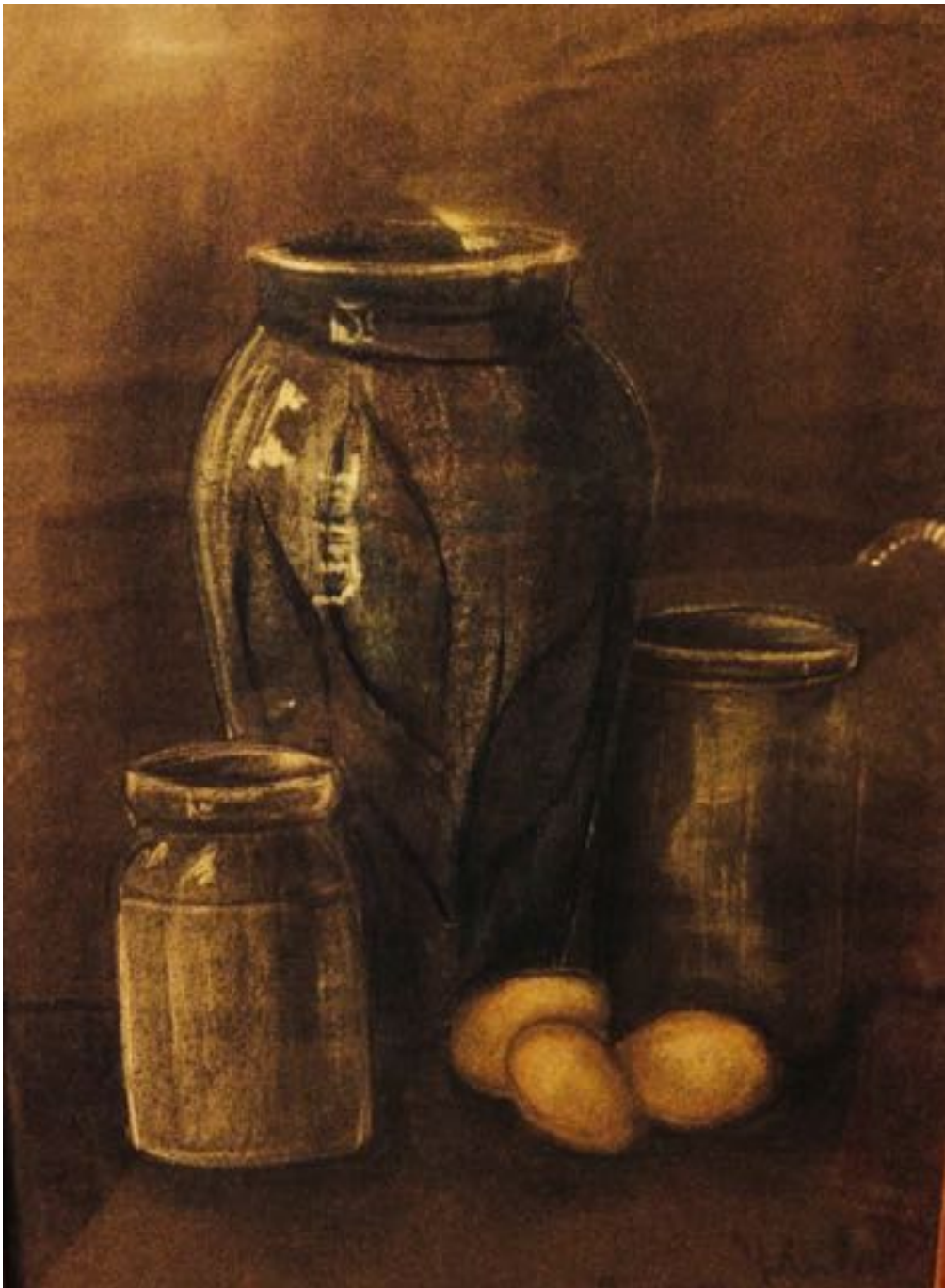
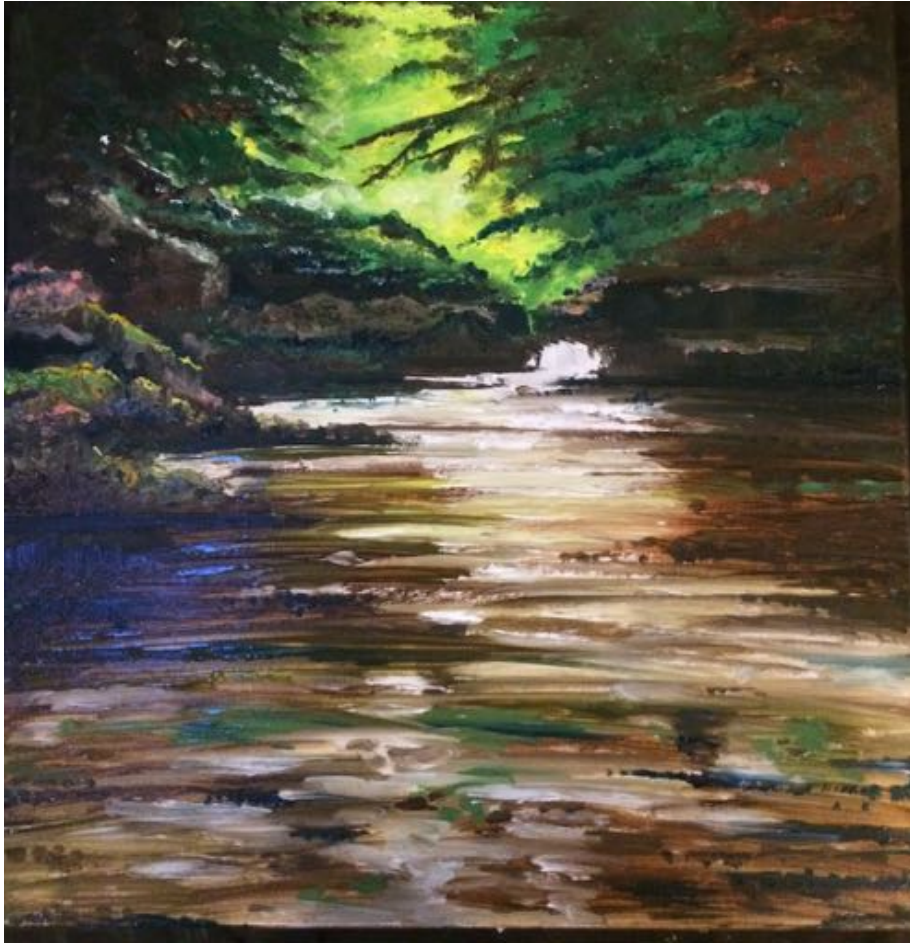


*How I am going from someone
who 'can' to someone who 'is'....*



Someone who can but someone who doesn't.....



To someone who can and someone who does...



The Accidental RE-Startist





This is what I do...





***Who decides whether I am someone who is or someone who isn't?
And how is it decided?***

***When is a Musician? An author? A Poet? A Comedian? An Artist?
An Entrepreneur?***

Is it defined by the 'effort' or the 'output'?

I NOW LOVE IT THAT SOME PEOPLE HATE IT!

And I always HATE it...

... and then I love it

...and then I let it go.

